

# iSumoBot® 4W Drive Combat Mobile Robot

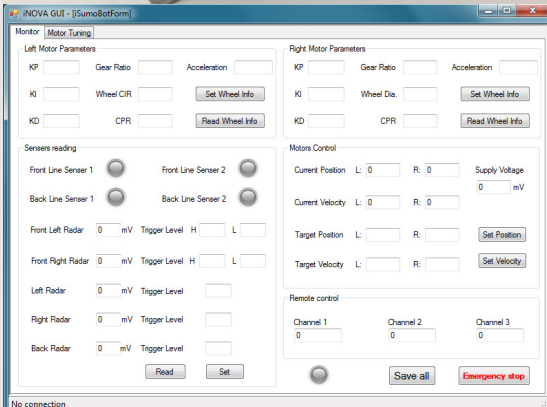
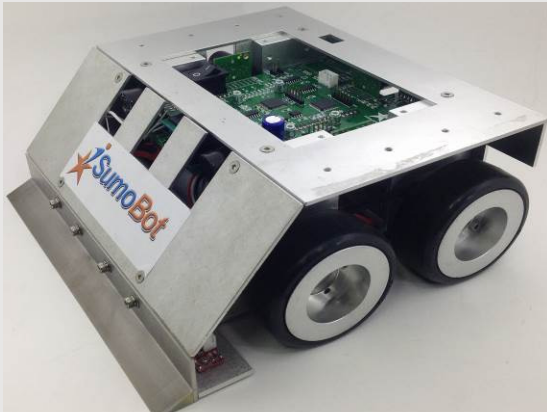
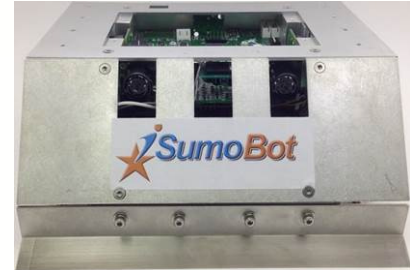
**NOVA**  
MICROSYSTEMS  
www.inovamicro.com

## Description

**iSumoBot® Soccer Robot System** is a high-quality compact 2-axis robot designed for both **autonomous** and **RC remote control** capabilities.

- Full metal chassis
- **Twin** high power servo motor encoder
- 4 wheel drive
- **PID closed loop control** for speed and position
- **4 IR sensor** as floor boundary sensor
- **5 Ultrasonic sensor** to sense surrounding objects
- **One RS-232 port**
- **Bluetooth** communication
- **Arduino** compatible
- **iQu®** enabled with PC software
- **Competition** event in Singapore and Japan

**SumoBot**



**Autonomous mode** during this mode, the robot can be programmed to perform the task automatically.

**RC mode** during this mode, user become the controller of the robot by using the standard RC remote controller.

**iQu®** is a robot control platform that allows

- Diagnose and control via PC software
- Access of I/O, sensors and motors
- Built-in robotic actions to perform tasks.

With **iQu®**, it can used as a general mobile robotic development platform.

## Training

Training is conducted upon request. The topics including

- System operation and maintenance
- Introduction to **iQu®** platform
- Introduction to C programming for Microchip MCU
- Action programming for sumo robot

